

Light efficiency:

47 Lumen/Watt

Light quality:

CRI: 88.9

Color temperature:

6743 K

Output: 18787 lm

Peak: 141199 cd

Power: 398 W

PF: 1.0

No photo

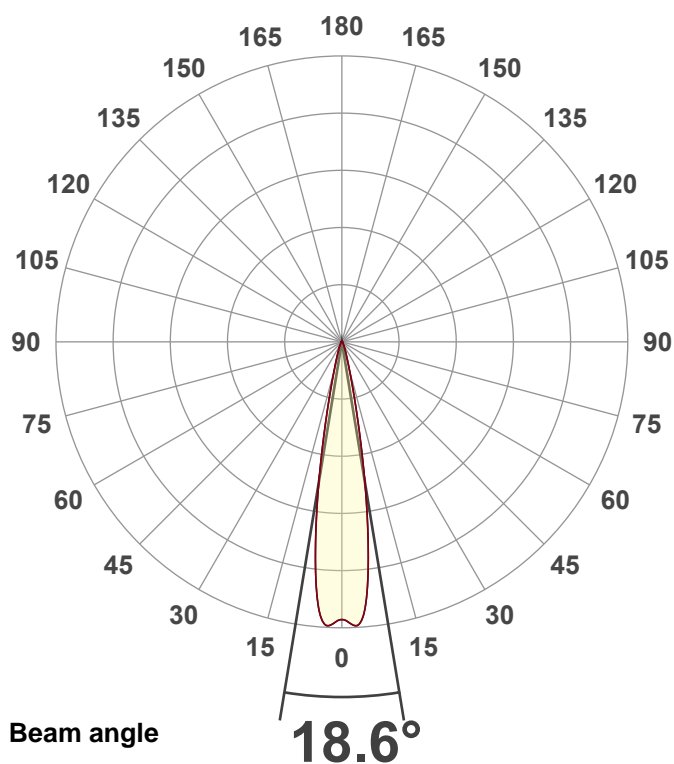
Product name:

40 Hex Panel IP (Full On,6500K)

Item number:

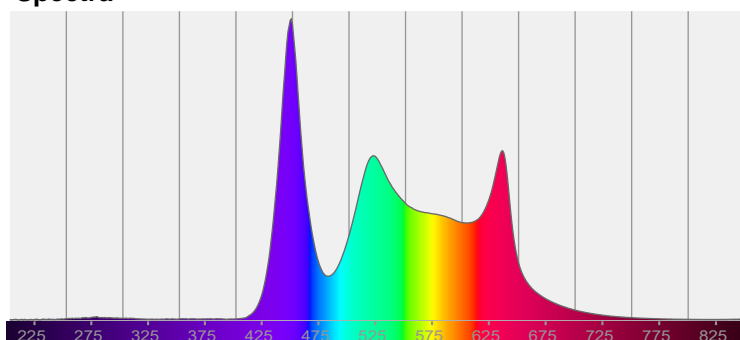
Date and time:

10/9/2025 2:58:20 PM



CIE 1931
x: 0.310
y: 0.318

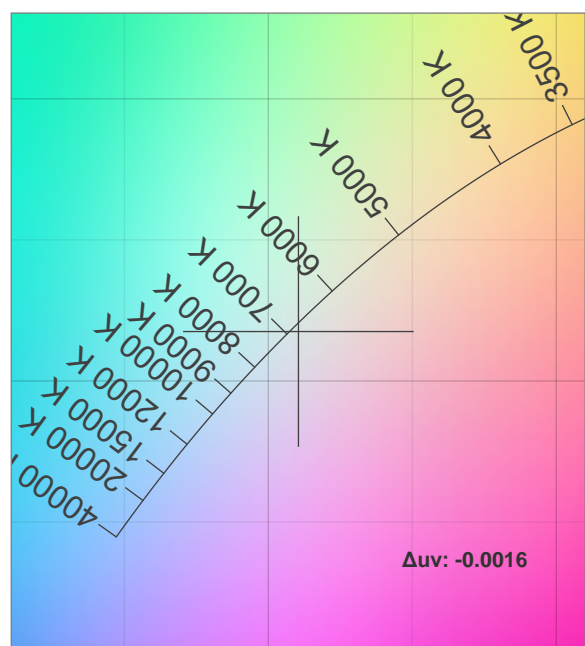
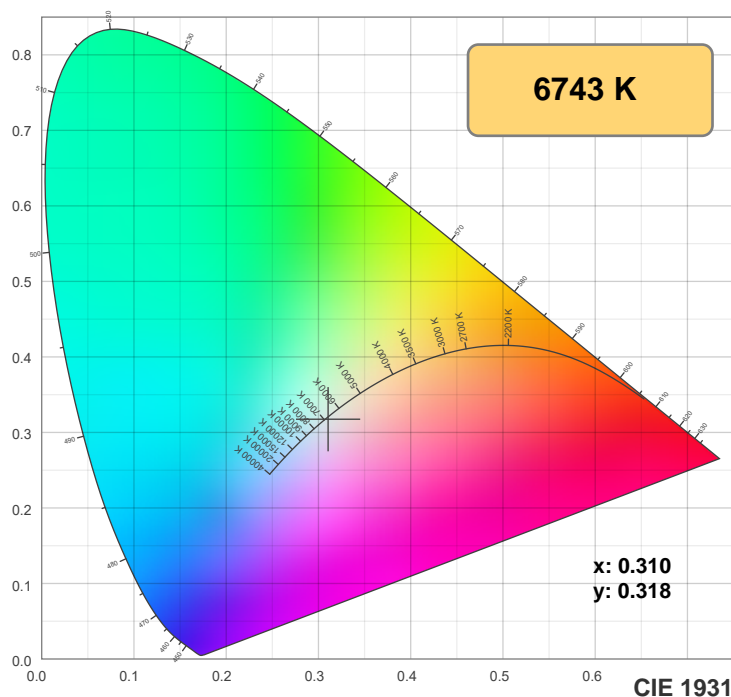
Spectra



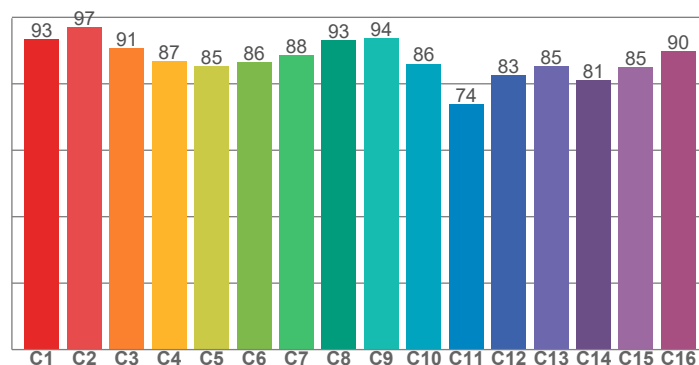
Power

Voltage: 115 V
Current: 3.46 A
Frequency: 0 Hz

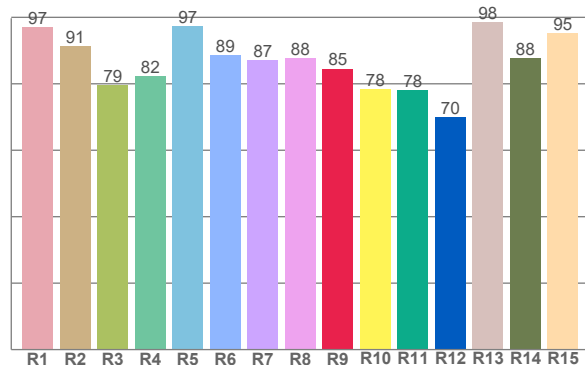
Color details



TM-30: 87.6



CRI: 88.9 (R1-R8)



CRI R values, only R1-R8 are used to calculate final CRI value

R1	R2	R3	R4	R5	R6	R7	R8	R9	R10	R11	R12	R13	R14	R15
97.1	91.4	79.5	82.3	97.3	88.6	87.2	87.8	84.5	78.4	78.0	70.0	98.4	87.8	95.2

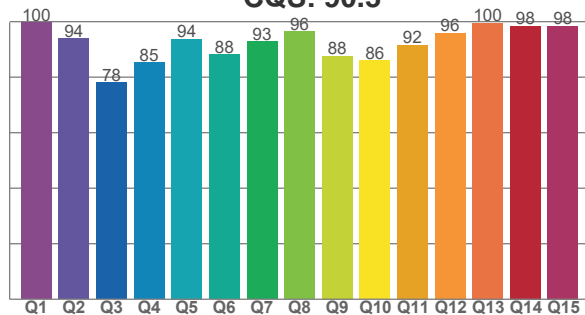
TM30 C values, 16 binned values out of total of 99 C values

C1	C2	C3	C4	C5	C6	C7	C8	C9	C10	C11	C12	C13	C14	C15	C16
93.4	96.9	90.8	86.7	85.3	86.5	88.5	93.2	93.7	86.0	73.8	82.6	85.2	81.1	85.0	89.8

CQS Q values

Q1	Q2	Q3	Q4	Q5	Q6	Q7	Q8	Q9	Q10	Q11	Q12	Q13	Q14	Q15
99.7	93.9	78.0	85.3	93.8	88.2	92.9	96.5	87.5	86.0	91.6	95.9	99.6	98.4	98.5

CQS: 90.3



Color parameters

Color temperature	Color rendering index	Red component	Color fidelity	Color gamut	Color quality scale	Color coordinate cie 1931	Color coordinate cie 1931	Color coordinate	Color coordinate	Color deviation from black body
CCT	CRI	CRI R9	TM30 Rf	TM30 Rg	CQS	x	y	u	v	Δuv
6743 K	88.9	84.5	87.6	107.4	90.3	0.310	0.318	0.201	0.308	-0.0016

TM-30 details

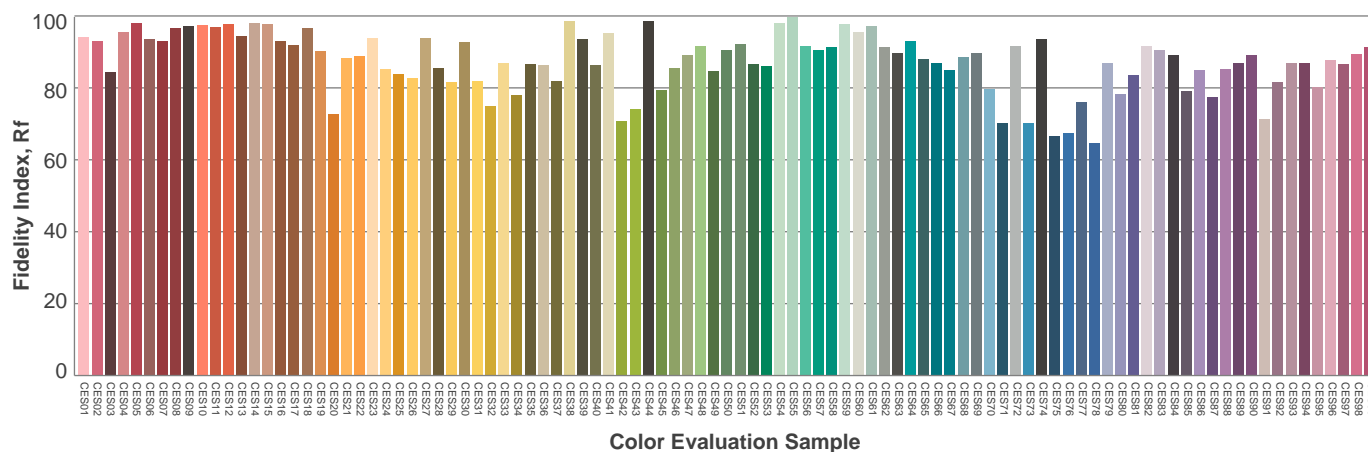
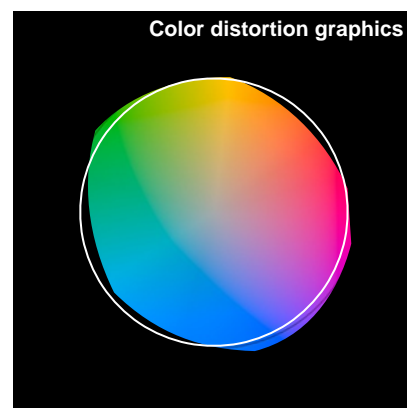
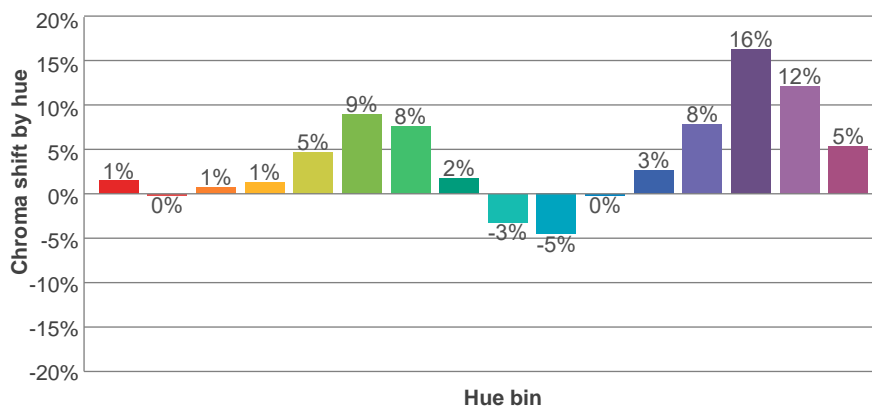
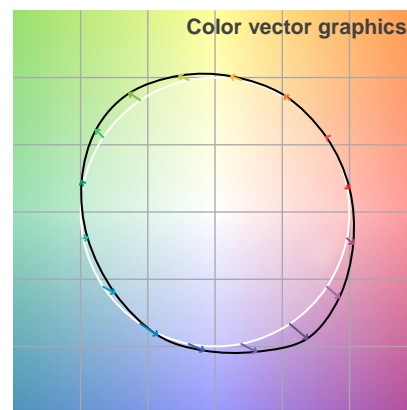
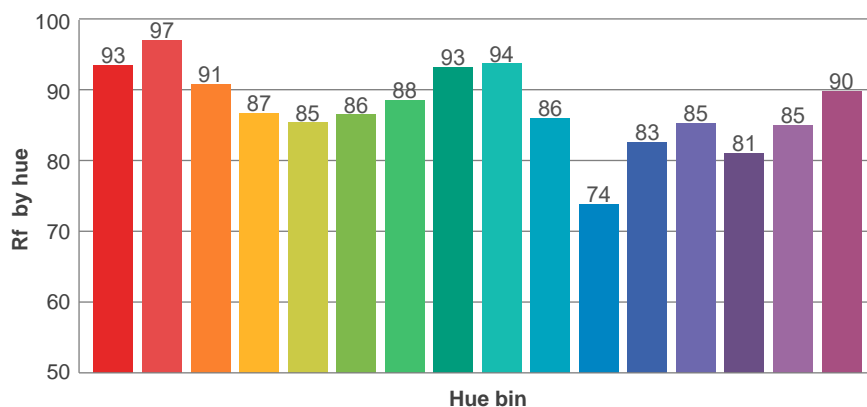
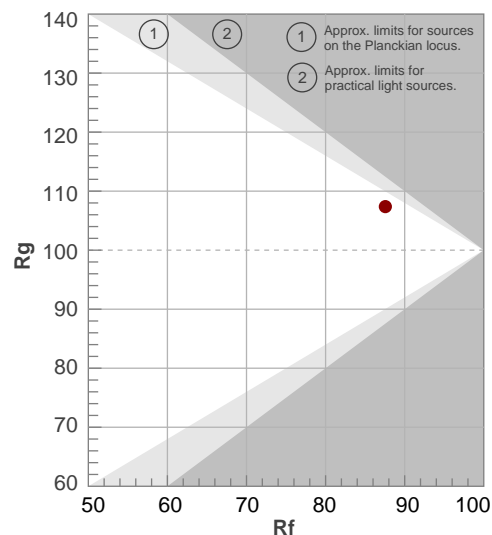
Rf 87.6

Fidelity index Rf

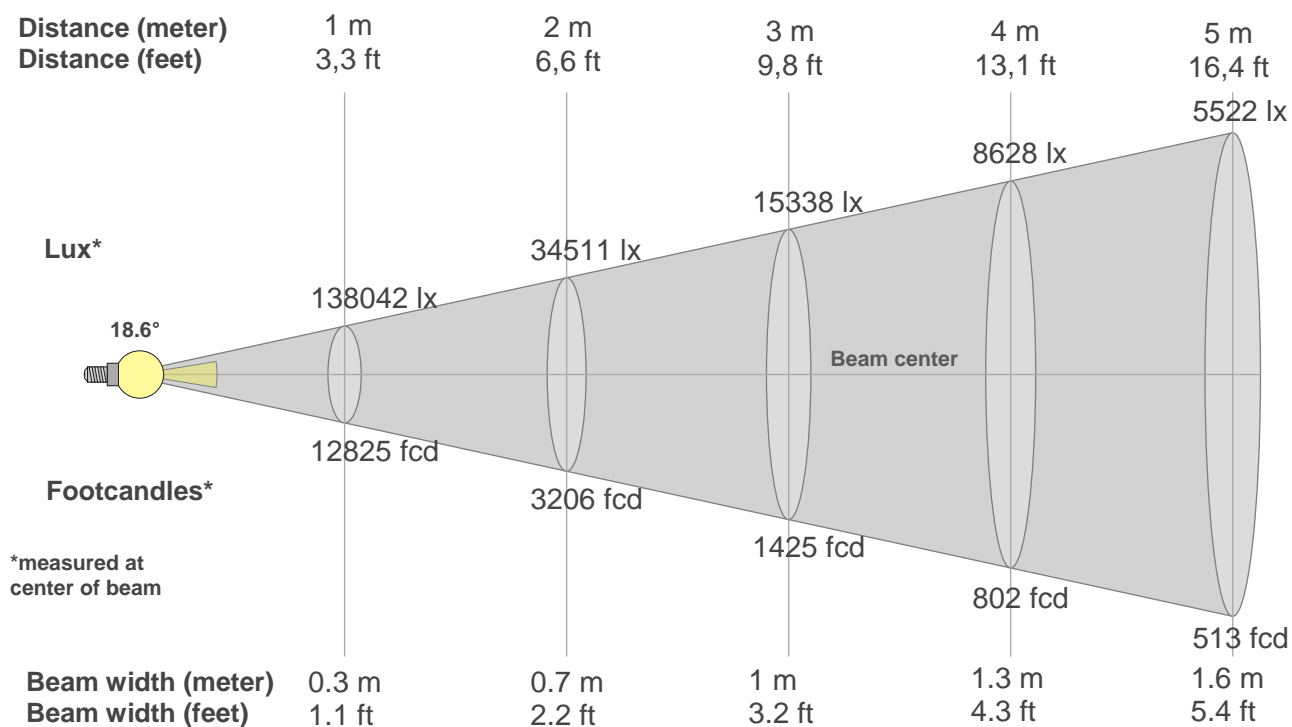
Rg 107.4

Gamut index Rg

Hue Bin	Ri	Shifts (%)	
		Chroma	Hue
1	93	1%	-2%
2	97	0%	0%
3	91	1%	5%
4	87	1%	8%
5	85	5%	6%
6	86	9%	4%
7	88	8%	-2%
8	93	2%	-3%
9	94	-3%	0%
10	86	-5%	8%
11	74	0%	15%
12	83	3%	12%
13	85	8%	10%
14	81	16%	5%
15	85	12%	-1%
16	90	5%	-3%



Beam details



Beam intensities from 1-20m

1m	2m	3m	4m	5m	6m	7m	8m	9m	10m	11m	12m	13m	14m	15m	16m	17m	18m	19m	20m
3.3ft	6.6ft	9.8ft	13.1ft	16.4ft	19.7ft	23ft	26.2ft	29.5ft	32.8ft	36.1ft	39.4ft	42.7ft	45.9ft	49.2ft	52.5ft	55.8ft	59.1ft	62.3ft	65.6ft
138042lx	34511lx	15338lx	8628lx	5522lx	3835lx	2817lx	2157lx	1704lx	1380lx	1141lx	959lx	817lx	704lx	614lx	539lx	478lx	426lx	382lx	345lx
12824.5 fcd	3206.1 fcd	1424.9 fcd	801.5 fcd	513 fcd	356.2 fcd	261.7 fcd	200.4 fcd	158.3 fcd	128.2 fcd	106 fcd	89.1 fcd	75.9 fcd	65.4 fcd	57 fcd	50.1 fcd	44.4 fcd	39.6 fcd	35.5 fcd	32.1 fcd

Intensities in 0° c-plane

0°	1°	2°	3°	4°	5°	6°	7°	8°	9°	10°	11°	12°	13°	14°	15°	16°	17°	18°	19°
138k	139k	140k	141k	139k	132k	122k	108k	92k	76k	60k	46k	34k	26k	19k	15k	12k	10k	8k	7k
100%	101%	102%	102%	101%	96%	88%	78%	67%	55%	43%	33%	25%	19%	14%	11%	9%	7%	6%	5%

Intensities in 90° c-plane

0°	1°	2°	3°	4°	5°	6°	7°	8°	9°	10°	11°	12°	13°	14°	15°	16°	17°	18°	19°
138k	139k	140k	141k	139k	132k	122k	108k	92k	76k	60k	46k	34k	26k	19k	15k	12k	10k	8k	7k
100%	101%	102%	102%	101%	96%	88%	78%	67%	55%	43%	33%	25%	19%	14%	11%	9%	7%	6%	5%

Intensities in 180° c-plane

0°	1°	2°	3°	4°	5°	6°	7°	8°	9°	10°	11°	12°	13°	14°	15°	16°	17°	18°	19°
138k	139k	140k	141k	139k	132k	122k	108k	92k	76k	60k	46k	34k	26k	19k	15k	12k	10k	8k	7k
100%	101%	102%	102%	101%	96%	88%	78%	67%	55%	43%	33%	25%	19%	14%	11%	9%	7%	6%	5%

Intensities in 270° c-plane

0°	1°	2°	3°	4°	5°	6°	7°	8°	9°	10°	11°	12°	13°	14°	15°	16°	17°	18°	19°
138k	139k	140k	141k	139k	132k	122k	108k	92k	76k	60k	46k	34k	26k	19k	15k	12k	10k	8k	7k
100%	101%	102%	102%	101%	96%	88%	78%	67%	55%	43%	33%	25%	19%	14%	11%	9%	7%	6%	5%

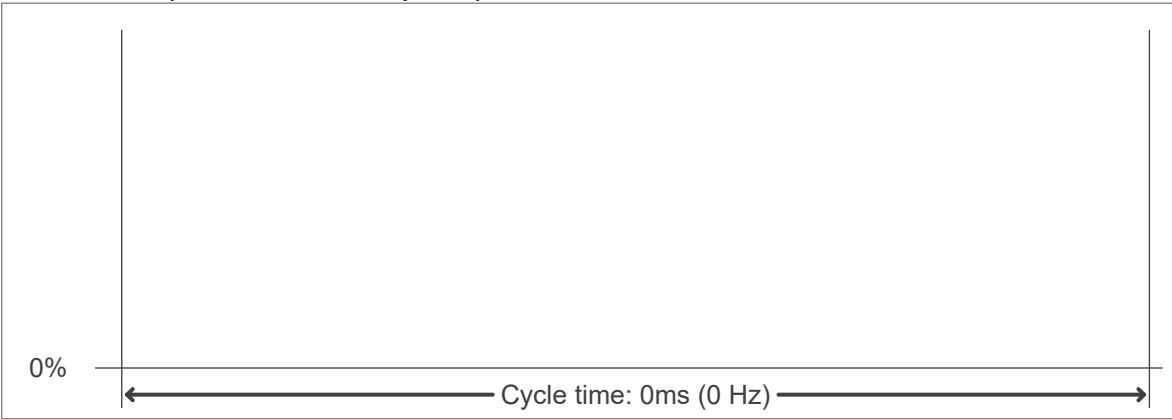
Beam angle 50%	Field angle 10%	Cutoff angle 2,5%	Intensity ratio in 120° cone	Intensity ratio in 90° cone
18.6°	30.4°	46.8°	96.4%	93.5%



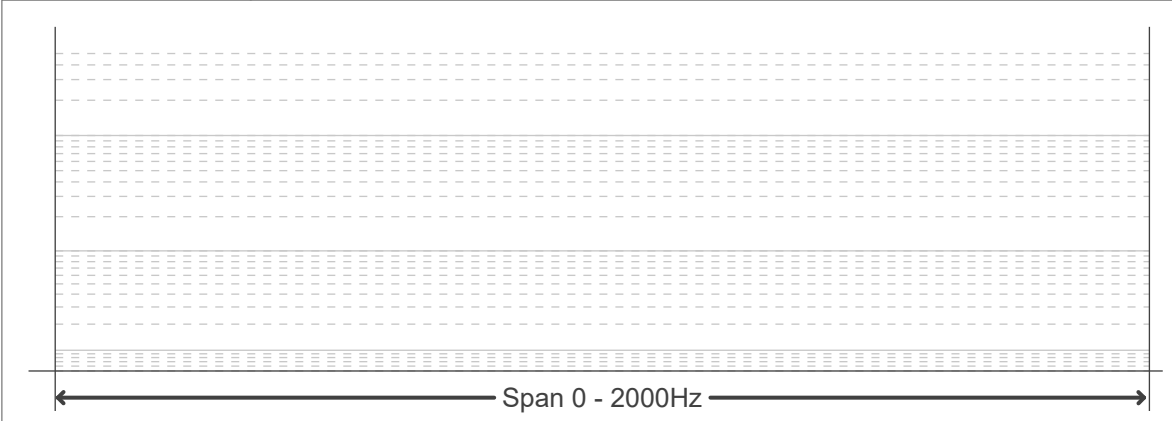
Flicker curve (complete sampled flicker signal)



Flicker frame (frame of one flicker period)



Flicker FFT (frequency scope of flicker curve)



Flicker results:

Flicker frequency:		n/a Hz	
Flicker index:	n/a	JA8/10 40Hz	n/a %
Flicker percentage:	n/a %	JA8/10 90Hz	n/a %
SVM: (Visual flicker)	n/a	JA8/10 200Hz	n/a %
PstLM	n/a	JA8/10 400Hz	n/a %
Mp	n/a	JA8/10 1000Hz	n/a %

Flicker conditions:

Sample rate:	n/a samples/second
--------------	--------------------